

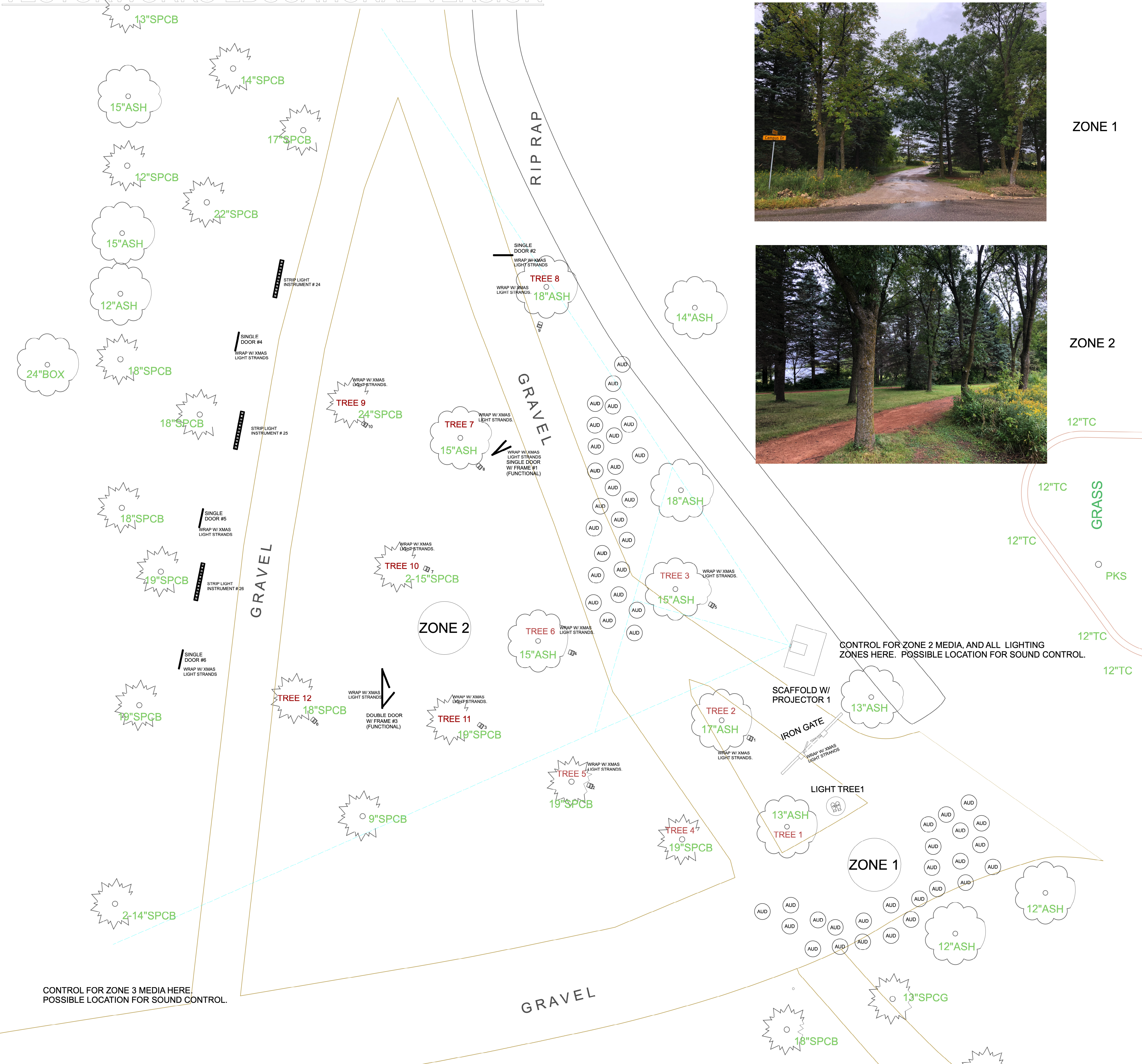


ZONE 1



ZONE 2

NATURAL LANDS SHED  
(2) 20 Amp Circuits



CONTROL FOR ZONE 3 MEDIA HERE  
POSSIBLE LOCATION FOR SOUND CONTROL.

CONTROL FOR ZONE 2 MEDIA, AND ALL LIGHTING  
ZONES HERE. POSSIBLE LOCATION FOR SOUND CONTROL.

- NOTES**
- Light tree (1) (ZONE 1) approx 8' tall w/ (2) Altman4.5x6.5 ERS. CIRCUIT INDEPENDENTLY.
  - Light tree (2) (ZONE 2) approx 10'-12' tall w/ (2) Altman4.5x6.5 ERS.
  - Light tree (3) (ZONE 2) approx 10'-12' tall w/ (2) Altman4.5x6.5 ERS.
  - Light tree (4) approx 8' tall w/ (2) Altman4.5x6.5 ERS.
  - Light tree (5) approx 10'-12' tall w/ (2) Altman4.5x6.5 ERS.
  - Light tree (6) approx 10'-12' tall w/ (2) Altman4.5x6.5 ERS.
  - ALL LED PARS ARE FLOOR MOUNTED.
  - GROUP ALL XMAS LIGHT STRANDS IN ZONE 2 LOCATED ON DOORS AND GATE TO THE SAME CIRCUIT.
  - GROUP XMAS LIGHT STRANDS IN ZONE 2 LOCATED ON THE FOLLOWING TREES TO THE SAME CIRCUIT (2,8,9,11). SCENE SHOP WILL WRAP LIGHT STRANDS. PROVIDE POWER AND CONTROL ONLY.
  - GROUP XMAS LIGHT STRANDS IN ZONE 2 LOCATED ON THE FOLLOWING TREES TO THE SAME CIRCUIT (3,5,6,7,10). SCENE SHOP WILL WRAP LIGHT STRANDS. PROVIDE POWER AND CONTROL ONLY.
  - ALL REBAR ARCHES NEED TO OPERATE INDEPENDENTLY OF EACH OTHER. SEPARATION OF EACH CHANNEL (RC) IS ALSO VERY IMPORTANT. REQUIRES 6 CIRCUITS.
  - PLEASE NOTE- FOCUS AND COLOR OF ALL INSTRUMENTS WILL FOLLOW AFTER FIRST RUN IS VIEWED.

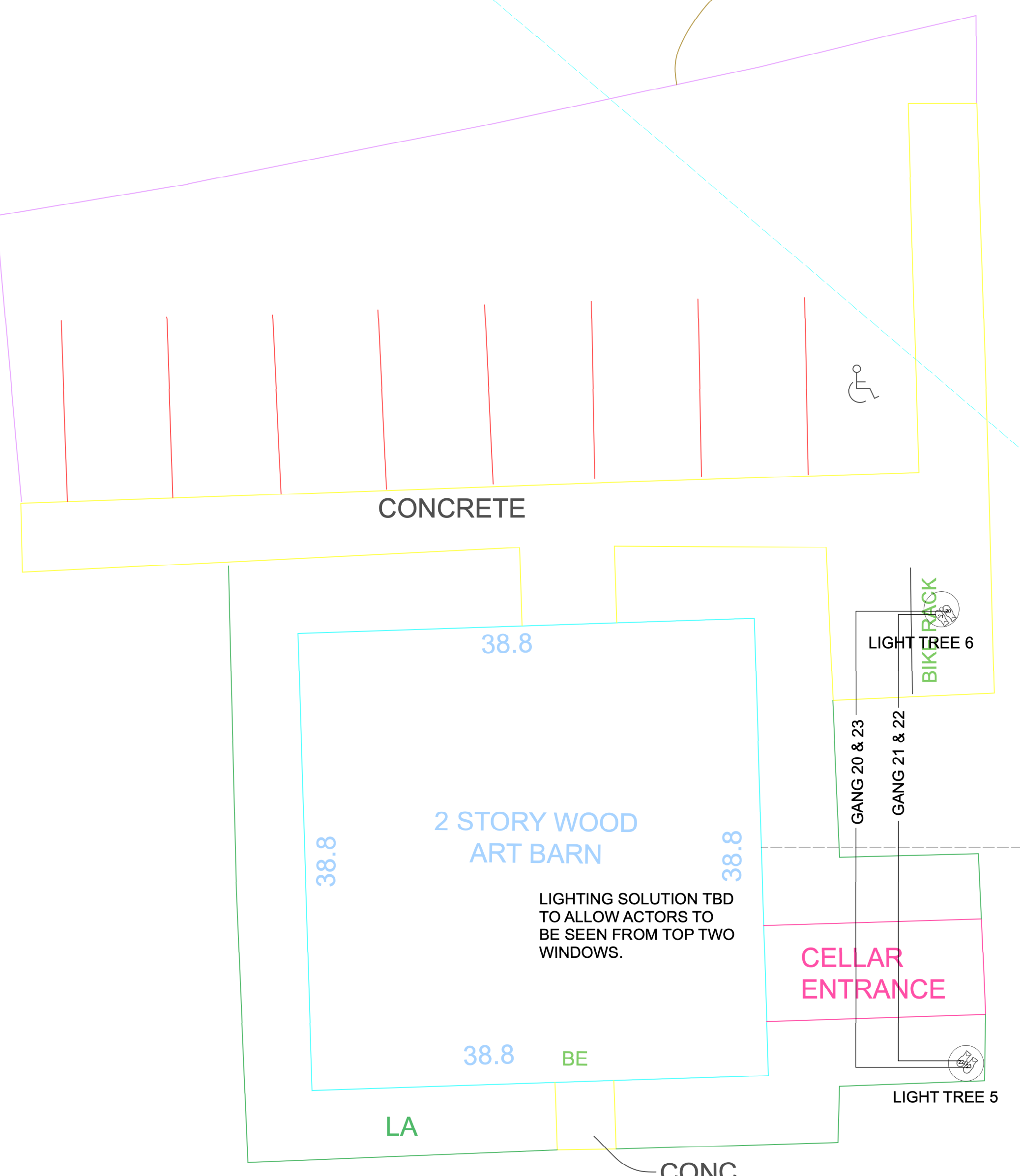
**TREES**



IRON GATE USED IN ZONE 2



ZONE 3



CONCRETE

2 STORY WOOD ART BARN

CELLAR ENTRANCE

SCAFFOLD W/ PROJECTOR 2  
MAPPED TO ARTBARN.  
REQUIRES DEDICATED 20AMP CIRC.

SCALE 1/8"=1'0"

REVISED 10/16/20 @10:40 AM



SOLAR PANEL

ZONE 4



ZONE 3A

- REBAR ARCH 1. LOCATED APPROX 87'-0" FROM CENTERLINE OF PROJECTOR. SCENE SHOP WILL WRAP LIGHT STRANDS. PROVIDE POWER AND CONTROL ONLY. (2) STRANDS OF LIGHT STRINGS (1) ALL RED BULBS- CIRCUIT # (1) ALL CLEAR BULBS- CIRCUIT #
- REBAR ARCH 2. LOCATED APPROX 132'-0" FROM CENTERLINE OF PROJECTOR. SCENE SHOP WILL WRAP LIGHT STRANDS. PROVIDE POWER AND CONTROL ONLY. (2) STRANDS OF LIGHT STRINGS (1) ALL RED BULBS- CIRCUIT # (1) ALL CLEAR BULBS- CIRCUIT #
- REBAR ARCH 3. LOCATED APPROX 179'-0" FROM CENTERLINE OF PROJECTOR. SCENE SHOP WILL WRAP LIGHT STRANDS. PROVIDE POWER AND CONTROL ONLY. (2) STRANDS OF LIGHT STRINGS (1) ALL RED BULBS- CIRCUIT # (1) ALL CLEAR BULBS- CIRCUIT #

